

**BÚSQUEDA SEMÁNTICA EN UN REPOSITORIO DE PROCESOS  
DE NEGOCIO**



**DANIEL FELIPE RIVAS BURBANO  
DAVID SANTIAGO CORCHUELO CASTRO**

**ANEXO No 2.**

**ENTORNO DE MODELADO DE LOS PROCESOS DE NEGOCIO  
(MODELADOR BPMO 1.4)**

**Director: Dr. JUAN CARLOS CORRALES**

**UNIVERSIDAD DEL CAUCA  
FACULTAD DE INGENIERÍA ELECTRÓNICA Y TELECOMUNICACIONES  
DEPARTAMENTO DE TELEMÁTICA  
POPAYÁN  
2010**

## ANEXO No 2. ENTORNO DE MODELADO DE LOS PROCESOS DE NEGOCIO (MODELADOR BPMO 1.4)

Para llevar a cabo el modelado de los modelos de procesos en la notación BPMO (Modelos BP), fue empleado el BPMO Modeler 1.4, el cual es un plugin del WSMO Studio [61]; éste último es un EMF (Eclipse Modeling Framework) para desarrollo de proyectos de software semántico. El Modelador BPMO (Figura 1) provee una gran variedad de funcionalidades, entre las cuales están:

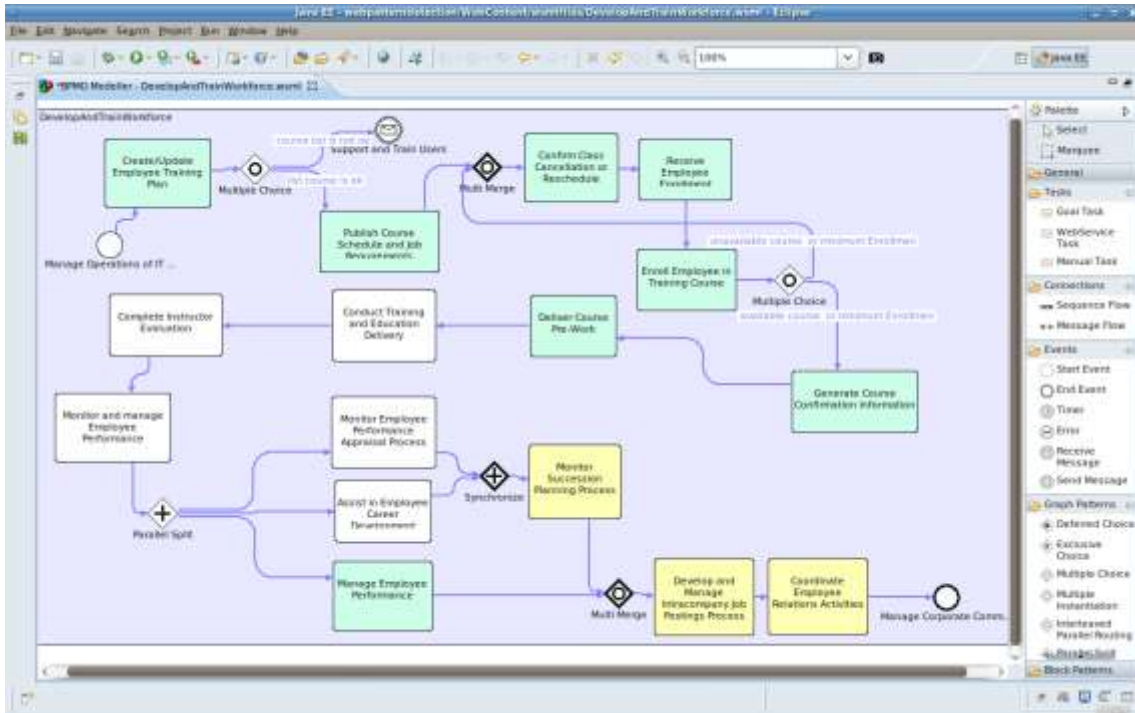
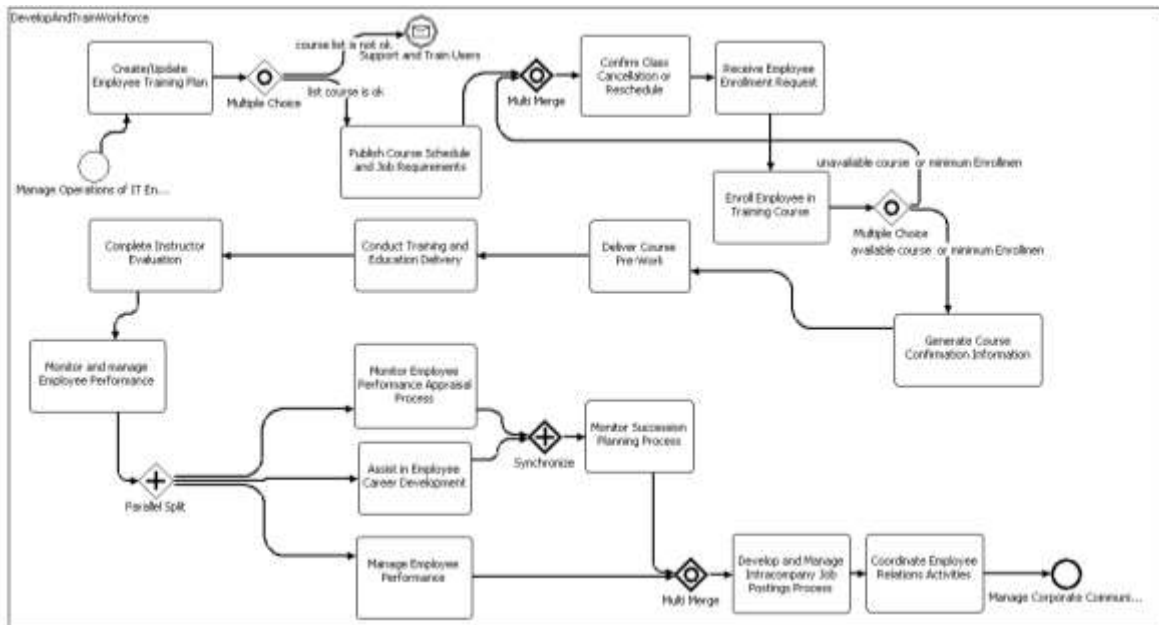


Figura 1. Modelador WSMO Studio.

- **WSMO editor plugin** es usado para crear las descripciones de todos los elementos WSML: ontologías, servicios, objetivos y mediadores.
- **Editor de Coreografía** es usado para crear las descripciones centrales de las coreografías de los servicios en WSMO.
- Permite la conexión remota a ontologías, objetivos y repositorios de servicios desde su interfaz de usuario.
- **Validador WSML** es usado para detectar problemas e inconsistencias dentro de las descripciones en los elementos WSML.
- **Razonador WSML-Flight** permite verificar que el rendimiento de las ontologías creadas, sea satisfactorio.
- Permite el uso de varios componentes de descubrimiento para alcanzar objetivos basados en el descubrimiento de servicios.
- **Editor SAWSDL**, que provee las funcionalidades para describir la información de mapeado entre las descripciones existentes entre los documentos WSDL y WSML.
- Contiene varios plugins de terceros que pueden ser usados desde su interfaz: el adaptador IRS-III, el Infrawebs Axiom Editor y el WSML Visualiser.
- **Editor BPMO** provee la funcionalidad de crear modelos de procesos de negocio semánticos de acuerdo a Business Process Modelling Ontology (BPMO).

En la Figura 2 se encuentra la representación gráfica de un BP Model del ejemplo llamado “*Develop and Train Workforce*”, modelado a partir de BPMO Modeler 1.4 descrito anteriormente. En esta es posible observar los eventos representados por elementos de contorno circular, las tareas representadas por elementos de contorno cuadrado con las esquinas redondeadas y las compuertas representadas por elementos de contorno en forma de rombo, así como los conectores de flujo de control representados por flechas que indican el orden y la secuencia en la cual se ejecutan las actividades.



**Figura 2.** Representación gráfica del BP Model de ejemplo “*Develop and Train Workforce*” descrito en WSMML a partir del BPMO Modeler 1.4

A continuación, la Figura 10 presenta el contenido del archivo del BP Model de ejemplo: “*Develop and train workforce.wsm*”, el cual cuenta con:

- **namespace:** contiene una URL asociada a la ontología utilizada para la descripción del BP Model, que para el marco de este trabajo de grado corresponde a bpmo-1-4-20080109 y otra URL asociada al EMF para desarrollo de proyectos de software semántico llamado WSMO Studio, el cual fue utilizado a lo largo del presente trabajo de grado como herramienta de modelado.
- **ontology:** corresponde al identificador de la instancia que se hace de la ontología para describir el BP Model.
- **importsOntology:** importación de la ontología bpmo-1-4-20080109 a partir de la cual se describe el BP Model.
- **instance:** instancias de los conceptos de la ontología bpmo-1-4-20080109 indicados por la palabra reservada “memberOf”.

Las demás líneas corresponden a los atributos de cada instancia de concepto de la ontología bpmo-1-4-20080109 y su valor puede ser una instancia de otro concepto o un tipo de dato los cuales son indicados por la palabra reservada “hasValue”, adicionalmente se pueden agregar propiedades no funcionales indicadas por la palabra reservada “nonFunctionalProperties”.

## “Develop train and workforce.wsmf”.

```
namespace { _"http://www.ip-super.org/ontologies/BPMO/bpmo-1-4-20080109#"
'
  wsmostudio _"http://www.wsmostudio.org#" }

ontology instanceOntology_1265864406355_2062259045
  nonFunctionalProperties
    wsmostudio#version hasValue "0.7.3"
  endNonFunctionalProperties

  importsOntology
    _"http://www.ip-super.org/ontologies/BPMO/bpmo-1-4-20080109#"

instance Task_1265869249595_203985252 memberOf Task
  hasName hasValue "Assist in Employee Career Development"
  hasDescription hasValue "to enhance an employee's skills to optimize performance and
reinforce the employee's ability to take on broader responsibilities; or changes in your
organization's functions"
  hasHomeProcess hasValue Process_1265864442709_1778458876
  receivesData hasValue EmployeePerformance
  sendsData hasValue EmployeeCareerDevelopment

instance Process_1265864442709_1778458876 memberOf Process
  hasName hasValue "DevelopAndTrainWorkforce"
  hasDescription hasValue "Workforce development has emerged to describe a relatively
wide range of activities, policies, and programs."
  hasWorkflow hasValue Workflow_1265869249596_1816462921

instance Workflow_1265869249596_1816462921 memberOf Workflow
  hasHomeProcess hasValue Process_1265864442709_1778458876
  hasWorkflowElement hasValue StartEvent_1265869249592_148649460

instance StartEvent_1265869249592_148649460 memberOf StartEvent
  hasHomeProcess hasValue Process_1265864442709_1778458876
  hasName hasValue "Manage Operations of IT Environment"

instance ControlflowConnector_1265869249599_1182940149 memberOf ControlflowConnector
  hasHomeProcess hasValue Process_1265864442709_1778458876
  hasSource hasValue Task_1265869249595_203985252
  hasTarget hasValue Synchronisation_1265869249595_347179985

instance Synchronisation_1265869249595_347179985 memberOf Synchronisation
  hasHomeProcess hasValue Process_1265864442709_1778458876
  hasIncomingConnector hasValue {ControlflowConnector_1265869249599_1182940149,
ControlflowConnector_1265869249599_894559872 }

instance ControlflowConnector_1265869249599_894559872 memberOf ControlflowConnector
  hasHomeProcess hasValue Process_1265864442709_1778458876
  hasSource hasValue Task_1265869249595_689927293
  hasTarget hasValue Synchronisation_1265869249595_347179985

instance Task_1265869249595_689927293 memberOf Task
  hasName hasValue "Monitor Employee Performance Appraisal Process"
  hasDescription hasValue "Most companies have a formal performance appraisal system in
which employee job performance is rated on a regular basis, usually once a year. A good
performance appraisal system can greatly benefit an organization."
  hasHomeProcess hasValue Process_1265864442709_1778458876
  receivesData hasValue EmployeePerformance
  sendsData hasValue EmployeePerformanceAppraisalProcess

instance EmployeePerformance memberOf DataEntity
  hasContent hasValue "http://ip-
super.org/ontologies/domain/YATOSP/sid/v1.3.0#PerformanceMeasure"

instance EmployeePerformanceAppraisalProcess memberOf DataEntity
  hasContent hasValue "http://ip-
super.org/ontologies/domain/YATOSP/sid/v1.3.0#PerformanceMeasure"

instance ControlflowConnector_1265869249598_2012925208 memberOf ControlflowConnector
  hasHomeProcess hasValue Process_1265864442709_1778458876
```

```

hasSource hasValue Task_1265869249594_2086344716
hasTarget hasValue Task_1265869249594_1783693746

instance Task_1265869249594_2086344716 memberOf Task
  hasName hasValue "Complete Instructor Evaluation"
  hasDescription hasValue "This evaluation instrument is used to improve the teaching effectiveness of the faculty member and the learning process of the employee"
  hasHomeProcess hasValue Process_1265864442709_1778458876
  receivesData hasValue TrainingandEducationDelivery
  sendsData hasValue InstructorEvaluation

instance TrainingandEducationDelivery memberOf DataEntity
  hasContent hasValue "http://ip-super.org/ontologies/domain/YATOSP/sid/v1.3.0#File"

instance InstructorEvaluation memberOf DataEntity
  hasContent hasValue "http://ip-super.org/ontologies/domain/YATOSP/sid/v1.3.0#File"

instance Task_1265869249594_1783693746 memberOf Task
  hasName hasValue "Monitor and manage Employee Performance"
  hasDescription hasValue "Employee performance management is a program that corporate management uses to evaluate the current performance of employees and to help improve the performance in the future. Employee performance management is a never-ending process to help the company and its workers"
  hasHomeProcess hasValue Process_1265864442709_1778458876
  receivesData hasValue InstructorEvaluation
  sendsData hasValue EmployeePerformance

instance EmployeePerformance memberOf DataEntity
  hasContent hasValue "http://ip-super.org/ontologies/domain/YATOSP/sid/v1.3.0#PerformanceMeasure"

instance ControlflowConnector_1265869249598_1328882639 memberOf ControlflowConnector
  hasHomeProcess hasValue Process_1265864442709_1778458876
  hasSource hasValue StartEvent_1265869249592_148649460
  hasTarget hasValue WebServiceTask_1265869249592_436141531

instance WebServiceTask_1265869249592_436141531 memberOf WebServiceTask
  hasName hasValue "Create and Update Employee Training Plan"
  hasDescription hasValue "Employee training programs provide focused training to a number of employees either on a one-time or recurring basis"
  hasHomeProcess hasValue Process_1265864442709_1778458876
  receivesData hasValue CalendarOperationsIT
  sendsData hasValue EmployeeTrainingPlan

instance CalendarOperationsIT memberOf DataEntity
  hasContent hasValue "http://ip-super.org/ontologies/domain/YATOSP/sid/v1.3.0#StandardWorkCalendar"

instance EmployeeTrainingPlan memberOf DataEntity
  hasContent hasValue "http://ip-super.org/ontologies/domain/YATOSP/sid/v1.3.0#Plan"

instance ControlflowConnector_1267034668884_1630364385 memberOf ControlflowConnector
  hasHomeProcess hasValue Process_1265864442709_1778458876
  hasSource hasValue ParallelSplit_1267034668883_624727885
  hasTarget hasValue Task_1265869249595_689927293

instance ParallelSplit_1267034668883_624727885 memberOf ParallelSplit
  hasHomeProcess hasValue Process_1265864442709_1778458876
  hasOutgoingConnector hasValue {ControlflowConnector_1267034668884_1466658587, ControlflowConnector_1267034668884_1630364385, ControlflowConnector_1267034668885_239734334}

instance ControlflowConnector_1267034668884_1466658587 memberOf ControlflowConnector
  hasHomeProcess hasValue Process_1265864442709_1778458876
  hasSource hasValue ParallelSplit_1267034668883_624727885
  hasTarget hasValue Task_1265869249595_203985252

instance ControlflowConnector_1267034668885_239734334 memberOf ControlflowConnector
  hasHomeProcess hasValue Process_1265864442709_1778458876
  hasSource hasValue ParallelSplit_1267034668883_624727885
  hasTarget hasValue WebServiceTask_1267034668884_689721832

```

```

instance WebServiceTask_1267034668884_689721832 memberOf WebServiceTask
  hasName hasValue "Manage Employee Performance"
  hasDescription hasValue "performance management includes activities to ensure that
goals are consistently being met in an effective and efficient manner. Performance
management can focus on performance of the organization, a department, processes to build a
product or service, employees, etc"
  hasHomeProcess hasValue Process_1265864442709_1778458876
  receivesData hasValue EmployeePerformance
  sendsData hasValue ManageEmployee

instance ManageEmployee memberOf DataEntity
  hasContent hasValue "http://ip-
super.org/ontologies/domain/YATOSP/sid/v1.3.0#ResourcePerformance"

instance ConditionalflowConnector_1267821735879_407988819 memberOf ConditionalflowConnector
  hasHomeProcess hasValue Process_1265864442709_1778458876
  hasSource hasValue MultipleChoice_1267821735878_76911386
  hasTarget hasValue MultiMerge_1267821735878_1980064553
  hasCondition hasValue Condition_1270858614574_1375648916

instance MultipleChoice_1267821735878_76911386 memberOf MultipleChoice
  hasHomeProcess hasValue Process_1265864442709_1778458876
  hasOutgoingConnector hasValue {ConditionalflowConnector_1267821735879_1663076259,
ConditionalflowConnector_1267821735879_407988819 }

instance ConditionalflowConnector_1267821735879_1663076259 memberOf ConditionalflowConnector
  hasHomeProcess hasValue Process_1265864442709_1778458876
  hasSource hasValue MultipleChoice_1267821735878_76911386
  hasTarget hasValue WebServiceTask_1265869249594_401151975
  hasCondition hasValue Condition_1270858614574_325208820

instance WebServiceTask_1265869249594_401151975 memberOf WebServiceTask
  hasName hasValue "Generate Course Confirmation Information"
  hasDescription hasValue "confirmation that the course is to be made to current
employees"
  hasHomeProcess hasValue Process_1265864442709_1778458876
  receivesData hasValue TrainingCourseList
  sendsData hasValue CourseConfirmationInformation

instance TrainingCourseList memberOf DataEntity
  hasContent hasValue "http://ip-super.org/ontologies/domain/YATOSP/sid/v1.3.0#File"

instance CourseConfirmationInformation memberOf DataEntity
  hasContent hasValue "http://ip-super.org/ontologies/domain/YATOSP/sid/v1.3.0#File"

instance Condition_1270858614574_325208820 memberOf Condition
  hasExpression hasValue "available course or minimum Enrollmen"

instance MultiMerge_1267821735878_1980064553 memberOf MutiMerge
  hasHomeProcess hasValue Process_1265864442709_1778458876
  hasIncomingConnector hasValue {ConditionalflowConnector_1267821735879_407988819,
ControlflowConnector_1267821735879_1494926135 }

instance ControlflowConnector_1267821735879_1494926135 memberOf ControlflowConnector
  hasHomeProcess hasValue Process_1265864442709_1778458876
  hasSource hasValue WebServiceTask_1265869249592_631884850
  hasTarget hasValue MultiMerge_1267821735878_1980064553

instance WebServiceTask_1265869249592_631884850 memberOf WebServiceTask
  hasName hasValue "Publish Course Schedule and Job Requirements"
  hasDescription hasValue "Before filling a job, it is wise to analyze the job to
determine what's required for optimal performance"
  hasHomeProcess hasValue Process_1265864442709_1778458876
  receivesData hasValue EmployeeTrainingPlan
  sendsData hasValue CourseSchedule

instance CourseSchedule memberOf DataEntity
  hasContent hasValue "http://ip-
super.org/ontologies/domain/YATOSP/sid/v1.3.0#ProjectSchedule"

instance Condition_1270858614574_1375648916 memberOf Condition

```

```

hasExpression hasValue "unavailable course or minimum Enrollmen"

instance ControlflowConnector_1265869249597_543964881 memberOf ControlflowConnector
hasHomeProcess hasValue Process_1265864442709_1778458876
hasSource hasValue MultiMerge_1265869249595_1754541056
hasTarget hasValue GoalTask_1265869249595_1478228053

instance MultiMerge_1265869249595_1754541056 memberOf MutiMerge
hasHomeProcess hasValue Process_1265864442709_1778458876
hasIncomingConnector hasValue {ControlflowConnector_1265869249597_980210718,
ControlflowConnector_1267034668884_1739067018 }

instance ControlflowConnector_1265869249597_980210718 memberOf ControlflowConnector
hasHomeProcess hasValue Process_1265864442709_1778458876
hasSource hasValue GoalTask_1265869249595_1225592672
hasTarget hasValue MultiMerge_1265869249595_1754541056

instance GoalTask_1265869249595_1225592672 memberOf GoalTask
hasName hasValue "Monitor Succession Planning Process"
hasDescription hasValue "A business often represents a lifetime of work and vision.
However, despite almost three-quarters of business owners wanting to transfer control or
exit ownership within the next decade, barely a third have a formal succession plan in
place."
hasHomeProcess hasValue Process_1265864442709_1778458876
receivesData hasValue {EmployeeCareerDevelopment, EmployeePerformanceAppraisalProcess }
sendsData hasValue SuccessionPlanningProcess

instance EmployeeCareerDevelopment memberOf DataEntity
hasContent hasValue "http://ip-super.org/ontologies/domain/YATOSP/sid/v1.3.0#File"

instance SuccessionPlanningProcess memberOf DataEntity
hasContent hasValue "http://ip-
super.org/ontologies/domain/YATOSP/sid/v1.3.0#AgreementTermOrCondition"

instance ControlflowConnector_1267034668884_1739067018 memberOf ControlflowConnector
hasHomeProcess hasValue Process_1265864442709_1778458876
hasSource hasValue WebServiceTask_1267034668884_689721832
hasTarget hasValue MultiMerge_1265869249595_1754541056

instance GoalTask_1265869249595_1478228053 memberOf GoalTask
hasName hasValue "Develop and Manage Intracompany Job Postings Process"
hasDescription hasValue "the process of transferring a corporation's technology between
international units of that company for ultimate transfer to their external customers"
hasHomeProcess hasValue Process_1265864442709_1778458876
receivesData hasValue {ManageEmployee, SuccessionPlanningProcess }
sendsData hasValue IntracompanyJobPostingsProcess

instance IntracompanyJobPostingsProcess memberOf DataEntity
hasContent hasValue "http://ip-
super.org/ontologies/domain/YATOSP/sid/v1.3.0#ProjectElementRelationship"

instance ControlflowConnector_1267821735878_217417251 memberOf ControlflowConnector
hasHomeProcess hasValue Process_1265864442709_1778458876
hasSource hasValue WebServiceTask_1267821735878_2121098092
hasTarget hasValue WebServiceTask_1267821735878_917240235

instance WebServiceTask_1267821735878_2121098092 memberOf WebServiceTask
hasName hasValue "Confirm Class Cancellation or Reschedule"
hasDescription hasValue "Notices will appear on the day the class is cancelled along
with any instructions from the instructor"
hasHomeProcess hasValue Process_1265864442709_1778458876
receivesData hasValue CourseSchedule
sendsData hasValue CourseReschedule

instance CourseReschedule memberOf DataEntity
hasContent hasValue "http://ip-
super.org/ontologies/domain/YATOSP/sid/v1.3.0#ProjectSchedule"

instance WebServiceTask_1267821735878_917240235 memberOf WebServiceTask
hasName hasValue "Receive Employee Enrollment Request"
hasDescription hasValue "Receive Employee Enrollment Request for training"

```

```

hasHomeProcess hasValue Process_1265864442709_1778458876
receivesData hasValue CourseReschedule
sendsData hasValue EmployeeEnrollmentRequest

instance EmployeeEnrollmentRequest memberOf DataEntity
hasContent hasValue "http://ip-
super.org/ontologies/domain/YATOSP/sid/v1.3.0#RequestResponseRelationship"

instance ControlflowConnector_1267821735879_277026841 memberOf ControlflowConnector
hasHomeProcess hasValue Process_1265864442709_1778458876
hasSource hasValue MultiMerge_1267821735878_1980064553
hasTarget hasValue WebServiceTask_1267821735878_2121098092

instance ControlflowConnector_1267821735879_384954600 memberOf ControlflowConnector
hasHomeProcess hasValue Process_1265864442709_1778458876
hasSource hasValue WebServiceTask_1267821735878_1666146599
hasTarget hasValue MultipleChoice_1267821735878_76911386

instance WebServiceTask_1267821735878_1666146599 memberOf WebServiceTask
hasName hasValue "Enroll Employee in Training Course"
hasDescription hasValue "means an agreed number of lessons within an agreed period of
time"
hasHomeProcess hasValue Process_1265864442709_1778458876
receivesData hasValue EmployeeEnrollmentRequest
sendsData hasValue TrainingCourseList

instance ConditionalflowConnector_1265869249598_502874903 memberOf ConditionalflowConnector
hasHomeProcess hasValue Process_1265864442709_1778458876
hasSource hasValue MultipleChoice_1265869249593_574487768
hasTarget hasValue SendMessageEvent_1265869249593_1339298540
hasCondition hasValue Condition_1270858614574_1267366404

instance MultipleChoice_1265869249593_574487768 memberOf MultipleChoice
hasHomeProcess hasValue Process_1265864442709_1778458876
hasOutgoingConnector hasValue {ConditionalflowConnector_1265869249598_1934137231,
ConditionalflowConnector_1265869249598_502874903 }

instance ConditionalflowConnector_1265869249598_1934137231 memberOf ConditionalflowConnector
hasHomeProcess hasValue Process_1265864442709_1778458876
hasSource hasValue MultipleChoice_1265869249593_574487768
hasTarget hasValue WebServiceTask_1265869249592_631884850
hasCondition hasValue Condition_1270858614574_2045606226

instance Condition_1270858614574_2045606226 memberOf Condition
hasExpression hasValue "list course is ok"

instance SendMessageEvent_1265869249593_1339298540 memberOf SendMessageEvent
hasHomeProcess hasValue Process_1265864442709_1778458876
hasName hasValue "Support and Train Users"

instance Condition_1270858614574_1267366404 memberOf Condition
hasExpression hasValue "course list is not ok"

instance ControlflowConnector_1265869249598_7538651 memberOf ControlflowConnector
hasHomeProcess hasValue Process_1265864442709_1778458876
hasSource hasValue WebServiceTask_1265869249594_401151975
hasTarget hasValue WebServiceTask_1265869249594_1588923813

instance WebServiceTask_1265869249594_1588923813 memberOf WebServiceTask
hasName hasValue "Deliver Course Pre-Work"
hasDescription hasValue "number of meetings that discussed the method of course work"
hasHomeProcess hasValue Process_1265864442709_1778458876
receivesData hasValue CourseConfirmationInformation
sendsData hasValue CoursePreWork

instance CoursePreWork memberOf DataEntity
hasContent hasValue "http://ip-
super.org/ontologies/domain/YATOSP/sid/v1.3.0#SimpleWorksProgram"

instance ControlflowConnector_1267034668885_1763999780 memberOf ControlflowConnector
hasHomeProcess hasValue Process_1265864442709_1778458876

```



```

hasSource hasValue Task_1265869249594_1783693746
hasTarget hasValue ParallelSplit_1267034668883_624727885

instance ControlflowConnector_1265869249597_645941398 memberOf ControlflowConnector
hasHomeProcess hasValue Process_1265864442709_1778458876
hasSource hasValue GoalTask_1265869249595_1478228053
hasTarget hasValue GoalTask_1265869249595_1415749288

instance GoalTask_1265869249595_1415749288 memberOf GoalTask
hasName hasValue "Coordinate Employee Relations Activities"
hasDescription hasValue "For motivating employees you can do few things which sound
very ordinary but the employee will feel great. No need to spend large amount, just small
things."
hasHomeProcess hasValue Process_1265864442709_1778458876
receivesData hasValue IntracompanyJobPostingsProcess
sendsData hasValue EmployeeRelationsActivities

instance EmployeeRelationsActivities memberOf DataEntity
hasContent hasValue "http://ip-
super.org/ontologies/domain/YATOSP/sid/v1.3.0#CompletedActivityStatus"

instance ControlflowConnector_1265869249599_171017254 memberOf ControlflowConnector
hasHomeProcess hasValue Process_1265864442709_1778458876
hasSource hasValue WebServiceTask_1265869249594_1588923813
hasTarget hasValue Task_1265869249594_382424142

instance Task_1265869249594_382424142 memberOf Task
hasName hasValue "Conduct Training and Education Delivery"
hasDescription hasValue "Conduct Training and Education Delivery for employee"
hasHomeProcess hasValue Process_1265864442709_1778458876
receivesData hasValue CoursePreWork
sendsData hasValue TrainingandEducationDelivery

instance ControlflowConnector_1265869249597_770698751 memberOf ControlflowConnector
hasHomeProcess hasValue Process_1265864442709_1778458876
hasSource hasValue WebServiceTask_1265869249592_436141531
hasTarget hasValue MultipleChoice_1265869249593_574487768

instance ControlflowConnector_1265869249599_358926220 memberOf ControlflowConnector
hasHomeProcess hasValue Process_1265864442709_1778458876
hasSource hasValue Task_1265869249594_382424142
hasTarget hasValue Task_1265869249594_2086344716

instance ControlflowConnector_1265869249597_1354130490 memberOf ControlflowConnector
hasHomeProcess hasValue Process_1265864442709_1778458876
hasSource hasValue Synchronisation_1265869249595_347179985
hasTarget hasValue GoalTask_1265869249595_1225592672

instance ControlflowConnector_1265869249596_1492521017 memberOf ControlflowConnector
hasHomeProcess hasValue Process_1265864442709_1778458876
hasSource hasValue GoalTask_1265869249595_1415749288
hasTarget hasValue EndEvent_1265869249596_1831754518

instance EndEvent_1265869249596_1831754518 memberOf EndEvent
hasHomeProcess hasValue Process_1265864442709_1778458876
hasName hasValue "Manage Corporate Communications"

instance ControlflowConnector_1267821735879_663389840 memberOf ControlflowConnector
hasHomeProcess hasValue Process_1265864442709_1778458876
hasSource hasValue WebServiceTask_1267821735878_917240235
hasTarget hasValue WebServiceTask_1267821735878_1666146599

```

Figura 1. Contenido del archivo del Modelo BP de ejemplo: "Develop and Train Workforce.wsmI"